

HORSE & PONY

Activity Sheet - 2017

Level 2 - Grades 6-7-8



**Allen County 4-H Skills
for Life
\$1.00**

What you will do in this project:

- Enroll in the 4-H program by January 15.
- Complete this project by answering 2 complete activities in this activity sheet and turning it in to the Extension Office **by June 30** or earlier.
- You do not have to have a horse to participate in a 4-H Horse and Pony Club.
- By May 15 complete and submit the 4Honline Horse ID with color pictures of the animals you intend to show. A maximum of 2 pictures per animal may be uploaded. The pictures must contain the face and all four(4) feet of the animal in the picture. Files must be a jpg, jpeg or png file.
- To enter into the Indiana State Fair, please go to www.indianastatefair.com and enter online. Each exhibitor is required to pay an entry fee at the time of entry. June 1, 2017 is the entry deadline. Late fees apply for entries made after June 1, 2017.
- Attend County 4-H workshops, meetings, and clean up days when offered—at least 2 horse club meetings and 2 riding (outdoor) meetings.
- To exhibit an educational poster, you must bring your completed poster for judging to the 4-H Exhibit Building on the designated day prior to the start of the County Fair.
- Refer to the Allen County 4-H Rules Book for a complete listing of all regulations concerning this project.
- Complete the attached Declaration Form.
- Complete the Fairentry online by published deadline - June 30.

Management Tips:

- Provide clean, fresh water to horses and ponies at all times. Horses will drink anywhere from 10-12 gallons of water per day. Ponies will drink a little less.
- Feed horses and ponies at least two times a day and at the same time every day.
- Make sure your horse/pony finishes their feed. Watch to see that animals on turnout are not being chased away from their food by other bossy horses or ponies.
- Check daily for injuries, sickness, unusual things or changes in behavior. You should spend enough time with them that you know when they are a little "off".
- Provide shade from the sun and protection from wind, snow and rain.
- De-worm and remove bots as needed. Treating horses and ponies for external parasites is important for their health and appearance.
- Clean and replace bedding often if horses or ponies are stalled.
- Rinse horses and ponies after you get them sweaty or when they get really dirty. Clean and conditioned hair and skin makes them feel and look better.
- Brush your horses and ponies to calm them and clean and train their hair. This is also a good time to bond with your equine friend.
- Exercise stalled horses or ponies daily; or make sure they have turnout time.
- To finalize preparation for showing, train your horse or pony at least three times a week. Remember, every time you are with them you are training.

4-H Member: _____ 4-H Club: _____

Grade in School (January 1, 2017) _____ Years in this project _____

Signature of 4-H Member verifying that you have completed these activities: _____

Signature of Parent that you have reviewed this information: _____

· 4001 Crescent Avenue · Fort Wayne, IN 46815-4590 ·
(260) 481-6826 · FAX: (260) 481-6439
Purdue University, Indiana Counties and U.S Department of Agriculture Cooperating
An Affirmative Action/Equal Opportunity Institution

4-H Animal Care:

The Indiana 4-H program strongly supports positive animal care and strongly opposes animal abuse. 4-H is also dedicated to the mission of developing youth and volunteers through "Learning by Doing" programs.

4-H livestock projects teach life skills such as acquiring knowledge, making decisions, and applying leadership skills.

When working and caring for animals, it is important to insure that appropriate safety measures are in place for both the animals and the persons who care for them. Therefore, there is no substitute for knowledge, common sense, and experience.

Animal handlers should study and learn to anticipate an animal's reaction and try and avoid problem situations. It is most important that 4-H members understand an animal's behavior so one can "outsmart" not "out-muscle" an animal. Foremost in the 4-H'er mind should always be safety of the handler and the animal

An animal's good health is often directly related to the environmental factors associated with its living space. The presence of predators, dust, odors, pests, temperature, and humidity has a direct effect on an animal's well-being.

Animals react favorably to daily care and comfortable housing. Consideration should also be given to specific animal needs such as size of their housing space, lighting, and ventilation. The best facilities and equipment cannot and should not be a substitute for daily observation and careful attention to signs of illness, injury, and/or unusual behavior.

Level 2 Activity 1 – Trail Course

In this activity, create a Trail Course using the following obstacles, You can draw, or cut and paste the items, or create a digital copy of your course. Attach completed Trail Course to these sheets

Items to include:

- Gate: open, ride through, and close
- Raincoat: put the raincoat on, or can be transferred from one side to another
- Water hazard: walk through a small area of water
- Bridge: walk across the bridge
- Mailbox: pick up the mail from one box and transfer to another
- Logs: be sure to have logs to walk, trot, lope/canter, side pass over
- Small jump standard: no more than 12" tall
- Back through a dog leg or "L" shaped obstacle
- Log Box: step in execute a 360 degree turn
- Ground tie: dismount and walk around your horse
- Your own idea _____

Level 2 Activity 1 – Trainer Body Language

In this activity, do some research on how trainer body language affects horses and their responses. Write a short essay explaining your findings. Attach the completed essay to these sheets.

Level 2 Activity 3 – My Goals

How do you feel about working toward goals, with and without your horse? What horsemanship goals do you want to accomplish? Name 5 goals you wish to accomplish with your horse.

5 Goals

1.

2.

3.

4.

5.

How will you work to achieve your goals?

Level 2 Activity 4 – Horse Terms

Define the following horse terms:

Dyspnea: _____

Palliative: _____

Probiotics: _____

Thrush: _____

Windpuff: _____

Trichobezoar: _____

Heterozygous: _____

Linebreeding: _____

Necropsy: _____

Axial Skeleton: _____

Parturition: _____

Dystocia: _____

Ringbone: _____

Verminous Arteritis: _____

Level 2 Activity 5 – Sight

Answers to questions in this section can be found in Equine Science by Jean T. Griffiths Cruz Bay Publishing 2008. Specifically Chapter 4 “Senses of the Horse”

Sight

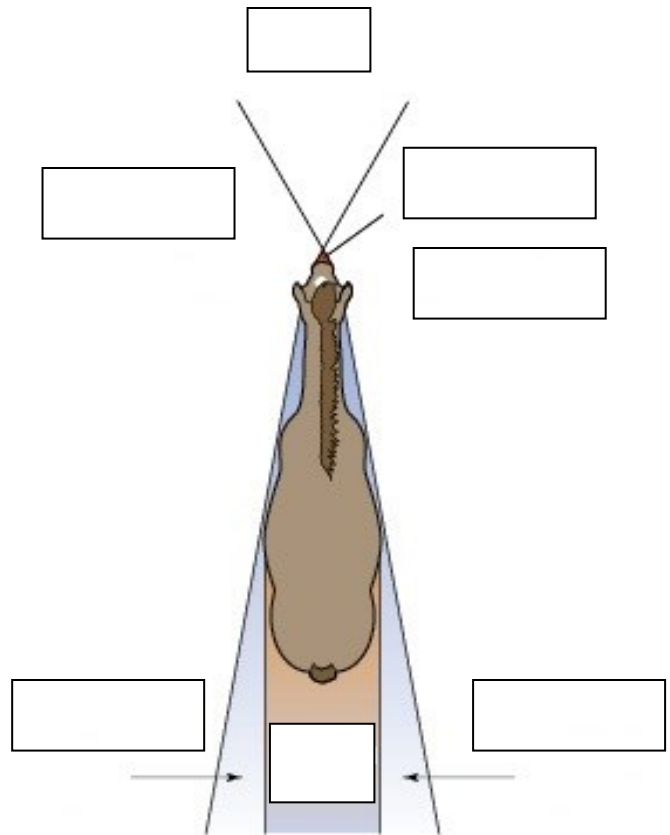
△ Place the labels in the correct section of the diagram:

Monocular Vision (2 of them)

Binocular Vision

Blind Spot (2 combined in this picture)

Marginal Sight



Do not stand directly behind your horse when brushing his tail. If you do, you are in one of his **blind spots**.

Don't assume your horse is paying attention to you. Keep your hand on your horse and talk to it while you are working.

When grooming, remember that ducking underneath your horse's neck means that he or she can't see you. The same goes for hugging, don't run at your pony and hug him, he might not be able see what's grabbing him and he might spook and hurt you.

Level 2 Activity 6 - Dressage Terminology

Find the words in the word search

Word Bank

LEGYIELD

TRAVERSE

RENVERS

HALFPASS

PIAFFE

PASSAGE

PARKED

PIVOTING

REACH

RHYTHM

SCHWUNG

TEMPO

OVERBENT

LIFT

IMPULSION

GOOSESTEP-
PING

ELEVATION

CADIENCE

CARRIAGE

ALIGNMENT

BALANCE

BEND

CONTACT

DRAGGING

L	P	T	Z	G	X	D	E	U	C	U	I	S	C	H	W	U	N	G	G	C	X	P	E	S
G	Y	G	R	Y	Y	C	X	H	E	V	W	M	U	Y	E	E	L	P	P	H	O	H	G	T
O	Z	P	Q	L	H	K	B	M	C	E	L	K	P	K	X	Y	Y	K	P	K	H	S	G	E
O	Q	S	G	Q	D	B	W	E	N	G	L	O	F	U	M	S	M	O	C	T	R	N	D	Y
S	T	C	W	Z	K	B	G	D	E	A	W	P	X	Q	L	A	X	R	B	E	B	Z	J	J
E	W	R	Q	R	Z	B	O	E	I	I	S	M	Y	G	J	S	Y	F	V	E	P	H	T	A
S	N	M	S	F	X	C	V	K	D	R	O	E	J	E	D	O	I	N	D	J	A	E	N	K
T	V	O	A	T	V	Z	H	R	A	R	W	T	S	C	X	U	E	O	L	L	Z	Q	E	B
E	Q	G	X	B	J	W	T	A	C	A	A	O	N	N	V	R	M	X	N	K	Z	P	M	U
P	V	L	R	M	Y	N	A	P	I	C	O	V	Y	A	O	P	P	H	B	J	N	A	N	E
P	R	C	Q	K	Q	B	V	Q	V	A	S	E	T	L	A	I	Q	I	J	E	G	M	G	S
I	U	D	P	C	O	N	T	A	C	T	R	R	M	A	R	T	T	T	V	H	N	T	I	O
N	R	C	L	B	S	C	L	N	H	L	M	B	I	B	X	T	D	A	D	O	N	D	L	M
G	D	N	V	B	V	U	D	T	R	A	V	E	R	S	E	W	F	P	V	K	T	B	A	O
E	E	O	Y	I	P	S	R	B	O	V	Z	N	H	T	O	W	U	P	D	E	K	I	A	N
W	T	W	P	A	S	S	A	G	E	C	C	T	J	Y	K	I	H	O	Q	D	L	J	N	C
W	A	B	E	P	F	G	G	K	P	V	O	S	V	D	G	Q	F	A	X	O	S	E	K	G
T	T	U	G	L	E	S	G	U	F	S	D	R	F	I	X	Q	Z	P	L	B	I	L	Z	I
P	I	U	C	Q	P	W	I	D	P	Q	F	V	R	R	Z	T	Y	E	F	F	A	I	P	O
E	A	M	I	Q	J	K	N	Z	S	I	N	C	G	Q	P	O	F	B	F	M	P	K	H	R
G	H	D	L	E	I	Y	G	E	L	D	G	M	E	O	V	T	I	I	H	N	O	A	E	P
E	V	Y	X	Q	Z	Z	P	L	Y	G	B	M	Y	N	H	L	F	T	L	Q	A	A	S	N
U	O	O	Q	M	Z	R	S	J	Z	I	J	E	E	I	A	J	Y	R	Z	U	C	S	U	S
U	U	O	K	W	M	E	W	B	C	C	E	N	E	N	B	H	U	D	Q	H	X	Y	H	J
V	D	V	C	O	A	A	N	J	U	J	O	B	B	A	R	H	Y	G	R	J	C	K	T	B

Allen County 4-H Horse & Pony Declaration Form

Due to the Purdue Extension office on June 30, 2017 by 4:30 pm

Mailing Address: Purdue Extension Office-Allen County
 4001 Crescent Ave
 Fort Wayne In 46815

Please list the two (2) horses or ponies that you plan to bring to the Allen County fair. You may have enrolled more than two (2) horses in the 4-H online System- however according to Allen County rules you are only allowed to exhibit a maximum of two (2) horses at the county fair.

4-H'ers Name _____

Phone Number _____

Email _____

Horse Name	Breed	Colors/Markings	Sex		Birthdate	Animal is under 56"		Animal is under 38"
			Mare	Gelding		Yes	No	Yes
1.								
2.								
3. Breeding Project ONLY								

Remember this form is due to the Extension Office, 4001 Crescent Ave. Fort Wayne, IN 46815 by June 30 at 4:30 pm.

Fax: 260-481-6439

____ Completed On Line 4-H Enrollment by January 15, 2017

____ Completed Animal ID on Line by May 15, 2017

____ Completed Fair Entry on line by June 30, 2017