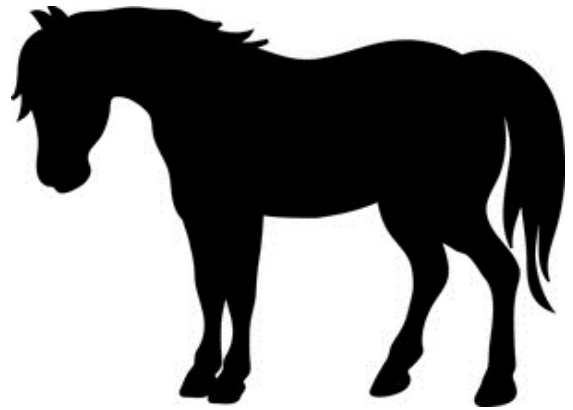


MINI HORSE AND PONY



FIRST YEAR

Activities:

- ◇ Must attend two indoor and two outdoor Horse and Pony Meetings.
- ◇ Complete the record sheet of the meetings you attended. This should be included with your exhibit.
- ◇ Complete at least 2 different activities from this packet.
- ◇ Make a poster or collage about the different breeds of horses. You can use pictures cut out of a horse magazine, the Internet or draw your own. Your poster should be 14" high and 22" wide. Cover your poster on the front with clear plastic stretched very smooth. This will keep your project clean. You can purchase a poster sleeve at the Extension Office.

Exhibit:

- ◇ Bring your poster to the County Fair. Attach the completed record sheet to the back of your poster. Make sure your name, club and grade are on the front side of your poster in the lower right hand corner.

SECOND YEAR

Activities:

- ◇ Must attend two indoor and two outdoor Horse and Pony Meetings.
- ◇ Complete the record sheet of the meetings you attended. This should be included with your exhibit.
- ◇ Complete at least 2 different activities from this packet.
- ◇ Make a poster or collage about horses. It should be some interesting aspect of horses (ie: housing, handling, uses, racing, safety or health care.) You can use pictures cut out of a horse magazine, the Internet or draw your own. Your poster should be 14" high and 22" wide. Cover your poster on the front with clear plastic stretched very smooth. This will keep your project clean. You can purchase a poster sleeve at the Extension Office.

Exhibit:

- ◇ Bring your poster to the County Fair. Attach the completed record sheet to the back of your poster. Make sure your name, club and grade are on the front side of your poster in the lower right hand corner.

THIRD YEAR

Activities:

- ◇ Must attend two indoor and two outdoor Horse and Pony Meetings.
- ◇ Complete the record sheet of the meetings you attended. This should be included with your exhibit.
- ◇ Complete at least 2 different activities from this packet.
- ◇ Make a poster or collage about the proper attire, tack and equipment needed for showing (ie: English, Western, Showmanship, Contesting brushes, saddles, bridles or halters.) You can use pictures cut out a horse magazine, the Internet or draw your own. Your poster should be 14" high and 22" wide. Cover your poster on the front with clear plastic stretched very smooth. This will keep your project clean. You can purchase a poster sleeve at the Extension Office.

Exhibit:

- ◇ Bring your poster to the County Fair. Attach the completed record sheet to the back of your poster. Make sure your name, club and grade are on the front side of your poster in the lower right hand corner.

Live Horse Exhibit

Mini 4-H members are allowed to show one (1) live horse at the Allen County Fair following the guidelines of the State 4-H Mini regulations. Refer to the Allen County 4-H Rule Book for details. All other rules and regulations are the same as 4-H members in grade 3-12.

Parent/Guardian MUST sign the Mini 4-H Liability Release Form; the Allen County Safety Policy for Mini 4-H Horse and Pony Members, and the Allen County Mini 4-H Horse and Pony ID Form (with color photo) by May 15 and all forms MUST be returned to the Extension Office by May 15. Vaccination Certificate must also be on file. In addition, if the Mini 4-H Member is leasing an animal, then the Animal Lease Agreement must be on file in the Extension Office by May 15th deadline.

Needs of the Horse

A beautiful, sleek, healthy horse is no accident. He is usually developed by a proud owner who sees that he is fed properly, grooms him faithfully, gives careful attention to his feet, and sees he has proper exercise.

◇ **Food** - Feed your animal a balanced diet.

-Hay: It should be free from dust or mold and have a good fresh smell. He needs 15 to 20 pounds a day depending on the age and how much he works. Pasture is substituted for hay in the summer time.

-Grain: Most horses need extra protein, carbohydrates, vitamins and minerals. Grain supplies these. Grains: are oats, corn, wheat and barley.

-Salt: Horses need and love to lick salt blocks.

◇ **Water** The average horse drinks 8-12 gallons of fresh water a day.

◇ **Housing** The horse is an outdoor animal, but he needs a place to get in out of the rain or bad weather. The barn needs to be safe, draft free and clean.

◇ **Exercise** Horses like to run and play in an open area or exercised if kept indoors. You can do this by riding them.

◇ **Grooming** This means to clean and brush a horse and most horses and ponies love to be brushed. They should be groomed every day before and after they are ridden. It gives them a shiny hair coat, gentles them and conditions the skin and muscles for better performance. These pictures are the grooming tools.



Grooming Cloth



Body Brush



Mane and Tail Comb



Curry Comb



Hoof Pick

- ◇ **Hoofs** This is the horse's foot. Hoofs need to be trimmed by a farrier (horseshoer) every 6 to 8 weeks and sometimes they need metal shoes. A hoof pick should be used to clean out hoofs so you can remove stones or any other object.
- ◇ **Health** A horse or pony needs to feel good to do their best just like you. A doctor for animals is called a veterinarian.
- ◇ **Teeth** Horses' teeth need to be checked. Their teeth can become too sharp for them to chew properly. The vet will file them off carefully.
- ◇ **Immunizations** Horses need injections to protect them from diseases such as flu, tetanus, etc.
- ◇ **Parasites** Worms and bots (fly eggs) can make a horse sick. The vet gives them medicine to get rid of these.

Horse Terms

- ◇ Mare - A mature female horse
- ◇ Filly - A young female horse up to 3 years.
- ◇ Colt - A young male horse
- ◇ Foal - A colt or filly under 1 year old.
- ◇ Stallion - A mature male horse
- ◇ Gelding - A male horse that cannot reproduce.

Activity 1 NO!NO!

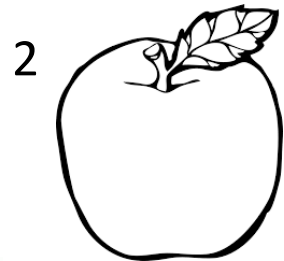
Name each picture and write its FIRST LETTER in the same number space in the box. Then read the members from 1 to 9 to spell out the two words that will complete this sentence:

It's very important to train your pony properly so he doesn't get any _ _ _ _ _ like rearing, pulling his halter, or striking you with his foot.

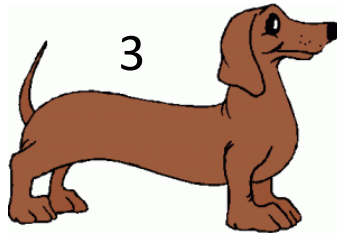
1.	_____
2.	_____
3.	_____
4.	_____
5.	_____
6.	_____
7.	_____
8.	_____
9.	_____



1



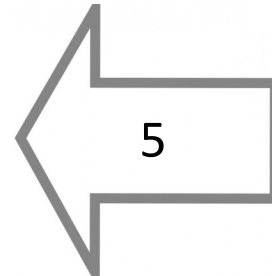
2



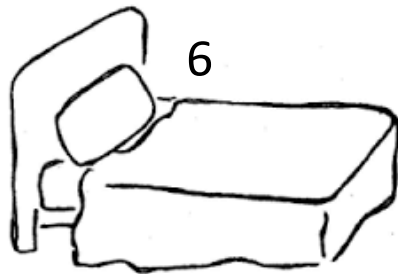
3



4



5



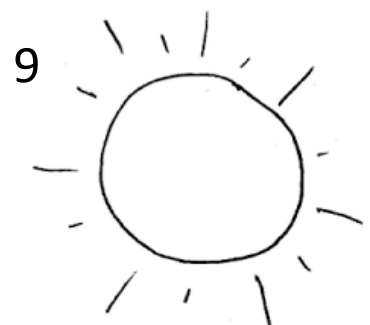
6



7



8



9

Activity 2 2-in-1 Words

All 36 terms printed below are words in their own right, but draw a line to pair each of them with the correct one in the opposite column, and you'll create 18 new terms that relate to horses.

hoof

seat

horse

bone

saddle

boot

barrel

pad

box

stall

cannon

shoe

barn

order

hay

Horse

curry

Pony

pecking

pick

posting

bale

Quarter

racing

salt

room

stock

bridle

tack

trot

Welsh

block

bell

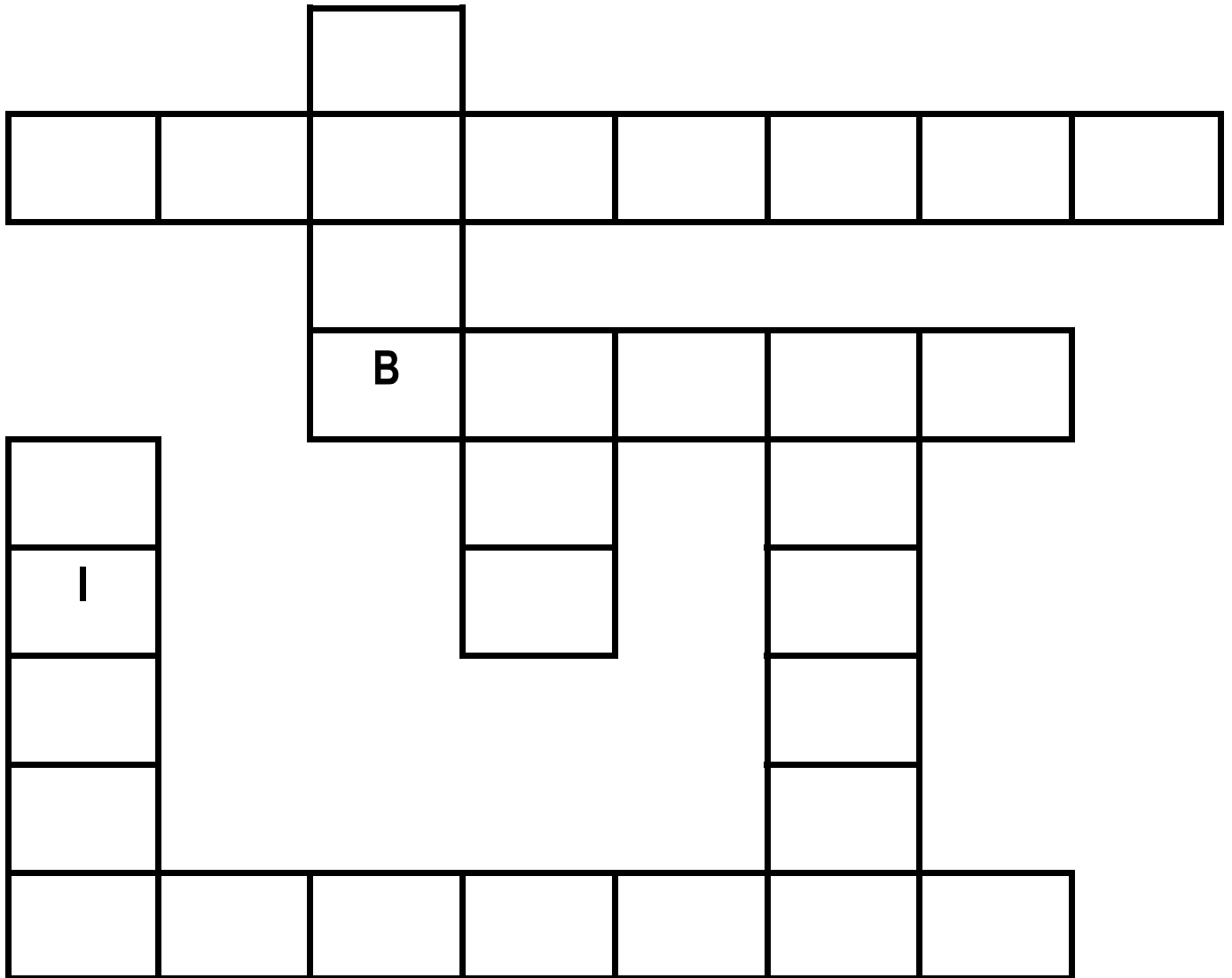
comb

double

sour

Activity 3 Good Grooming

You need special equipment to keep your pony well-groomed. Here are a few of the things you might use. Put each word into the grid. Two letters are already filled in to help you get started.



BRUSH

COMB

HOOF PICK

MITTS

RAG

SCRAPER

SPONGE

Activity 4 How Tall is a Horse?

How tall is a horse? How tall are you? The height of a horse is measured in “hands”. A hand is 4 inches. This was taken from the width of a man’s hand. Trace the outline of your hand, with fingers and thumb together, below. Then, with the help of a family member or 4-H leader, measure the width of your hand and find out how tall in hands you are.

My hand is _____ inches wide.

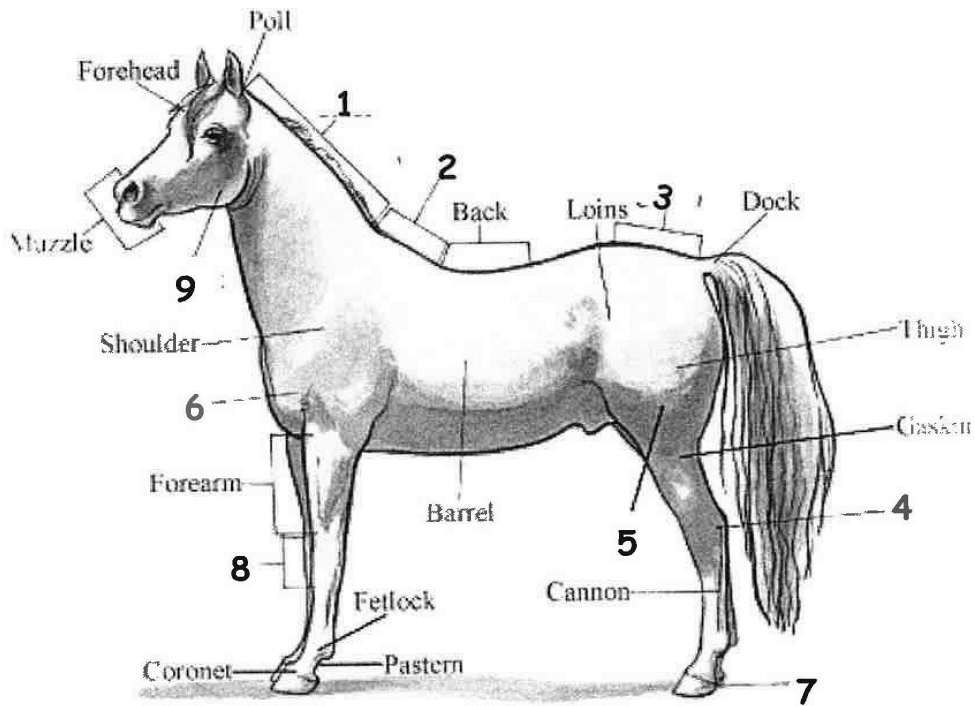
I am _____ inches tall.

I am _____ hands tall.

Activity 5 Parts of a Horse

Use the words below to finish labeling the parts of a horse.

- | | |
|----------|----------|
| 1. _____ | 4. _____ |
| 2. _____ | 5. _____ |
| 3. _____ | 6. _____ |
| 7. _____ | |
| 8. _____ | |
| 9. _____ | |



- | | | |
|-------|------|--------------|
| Chest | Hock | Stifle |
| Crest | Hoof | Throat latch |
| Croup | Knee | Withers |

Activity 6 What do Horses Eat?

You will need:

- Crayons, markers or colored pencils

Here is what to do:

- Find and circle the fun horse feed words in the puzzle.

Find these words:

Alfalfa	Apples	Barley	Bran	Carrots	Clover
Corn	Grass	Hay	Molasses	Oats	Pellets
Salt	Sugar	Water			

M	T	I	W	A	R	E	E	T	M	B	L
E	O	A	T	S	N	Y	O	L	R	A	S
B	D	L	F	E	U	M	R	A	P	K	U
R	M	D	A	P	P	L	E	S	O	U	G
A	W	E	V	S	J	I	B	H	R	T	A
N	R	O	C	Z	S	Q	K	P	B	O	R
U	E	W	L	P	G	E	H	Y	A	M	U
D	F	B	G	R	A	S	S	L	R	K	P
G	X	L	Y	D	M	N	R	T	L	Z	E
R	E	V	O	L	C	Q	F	S	E	K	L
E	D	A	S	Z	X	N	B	V	Y	O	L
T	Y	R	H	E	C	F	S	A	X	M	E
A	L	F	A	L	F	A	Y	Z	Q	L	T
W	J	B	Y	E	C	A	R	R	O	T	S

Allen County

Mini Horse and Pony Club Meeting Record Sheet

Name _____

Club _____

Grade in School this past year _____

Record the two (2) indoor meetings you attended:

#1 Date _____

Location _____

#2 Date _____

Location _____

Record the two (2) outdoor meetings you attended:

#1 Date _____

Location _____

#2 Date _____

Location _____